

Suitable fuels:

The following materials are approved for burning in your fireplace (refer also to chapter 5.1.):

Dry, natural wood, wood briquettes according to DIN 51731;

lignite briquettes 6" and 7".

Fuel quantities, setting of combustion air damper, operation:

See chapters 5.4, 5.5 and 5.6 in the Operating Instructions and table below.

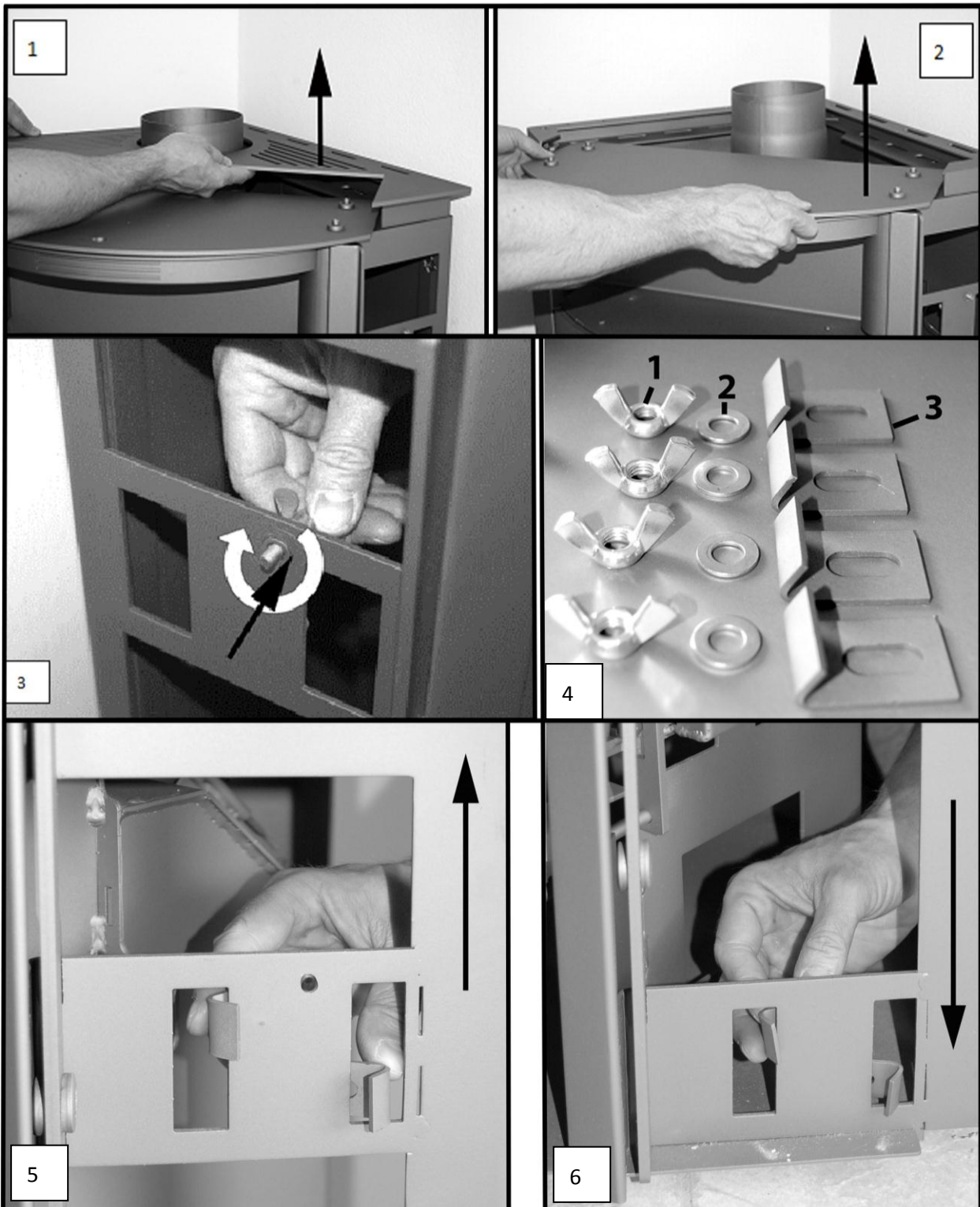
0050101020005	Stone 102	480x235x30
0050101030005	Stone 103	480x235x30
0050101750005	Stone 175	370x220x30
0050101580005	Stone 158	370x120x30

Fuels	Maximum fuel quantity	Primary air damper (4) (Air flow through the grating)	Secondary air damper (5)
Wood billets, wood briquettes	3 – 4 billets (approx. 2,0 – 2,5 kg) or 1 wood briquette (2,0 kg)	For 10 minutes:Open, then closed	Automatic
Lignite briquettes:	3 – 4 briquettes Approx. 2,0 -2,5 kg	Open	Automatic

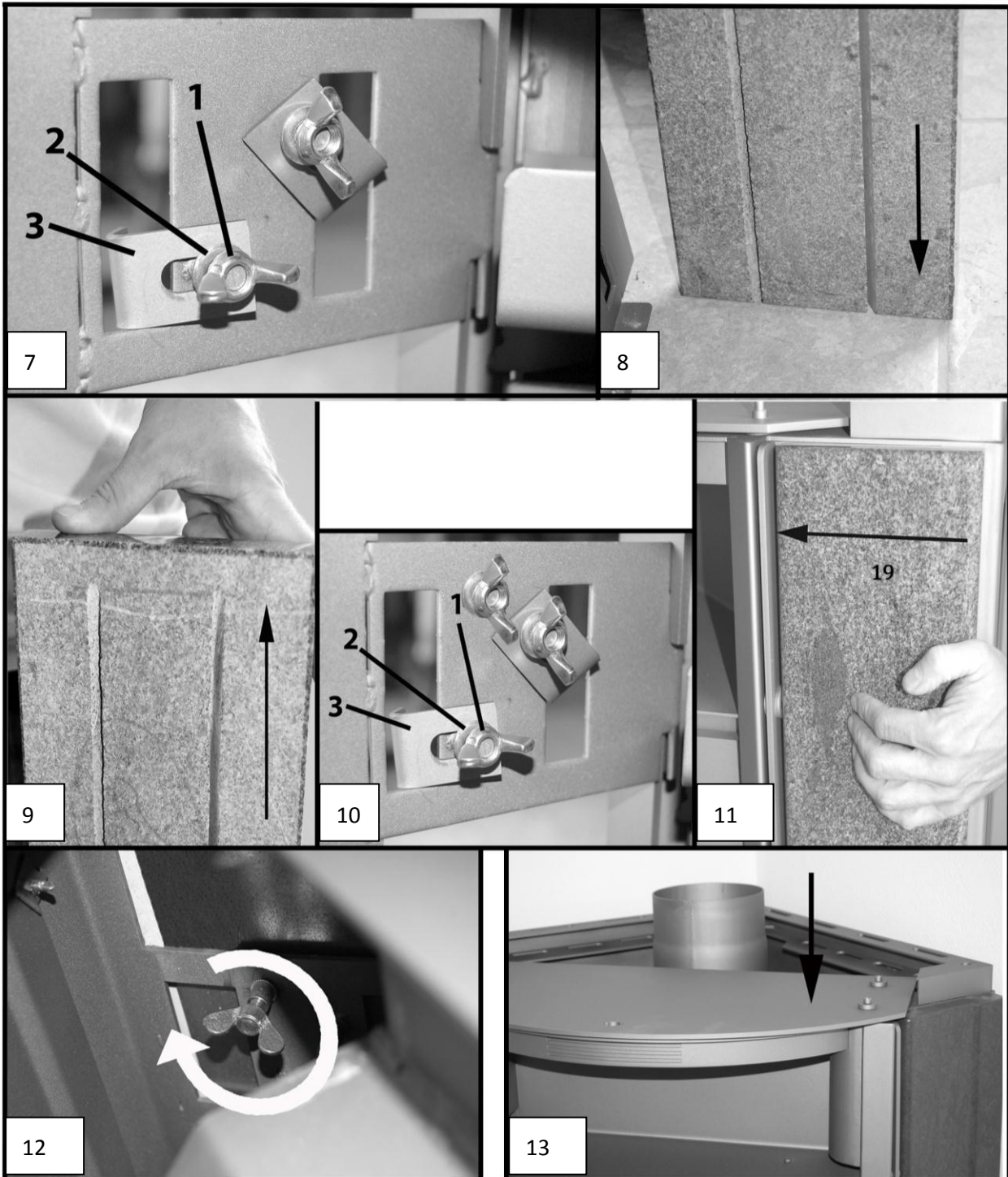
Spare parts no.	Item	Designation	Spare parts no.	Item	Designation
0417217035300	1	Fire chamber door	-	13	Warming compartment insert plate
0417217005304	2	Glass pane 475x350	0417217035121	14	Cover plate steel
0425317035302	3	Fire chamber door handle	-	15	Side parts
-	4	Primary air damper	0425317006700	16	Upper draft deflection plate 405x195
-	5	Secondary air damper	0050500020005	17	Lower draft deflection plate 385x280
0088500050005	6	Outside air - pipe fitting	0020100020005	18	Grating Ø 215
-	7	Riddling grate	0417217006010	19	Base support framework
0421817005003	8	Smoke pipe spigot	0417217006800	20	Cover plate steel
0427717005600	9	Ash pan	0088400220005	21	Door spring
0417217006508	10	Upright grating (390x105)			
0417217005801	11	rear cover plate steel	0041014140005	-	Seal door 14 mm
-	12	Cover plate	0040210040005	-	Seal glass 10x4 mm

Technical data:		Kuopio-II 265.17-ST			
Height	1140 mm	Flue gas temperature on the spigot of the heat generator	300 °C		
Width	778 mm	Minimum delivery pressure	12 Pa		
Depth without handles	643 mm	Minimum delivery pressure with 0.8 times rated thermal capacity	10 Pa		
Weight PD/ST	207 kg	Flue mass flow	7,6 g/s		
Pipe spigot	150 mm	Fuel	Wood	Wood briquette	lignite briquettes
Rated heating capacity	8 kW	CO2	10,0%		9,4%
Thermal output range	2,4-8,8 kW	Efficiency	80,8%		75,5%
Inspection no. EN 13240 RRF 40 07 1410					

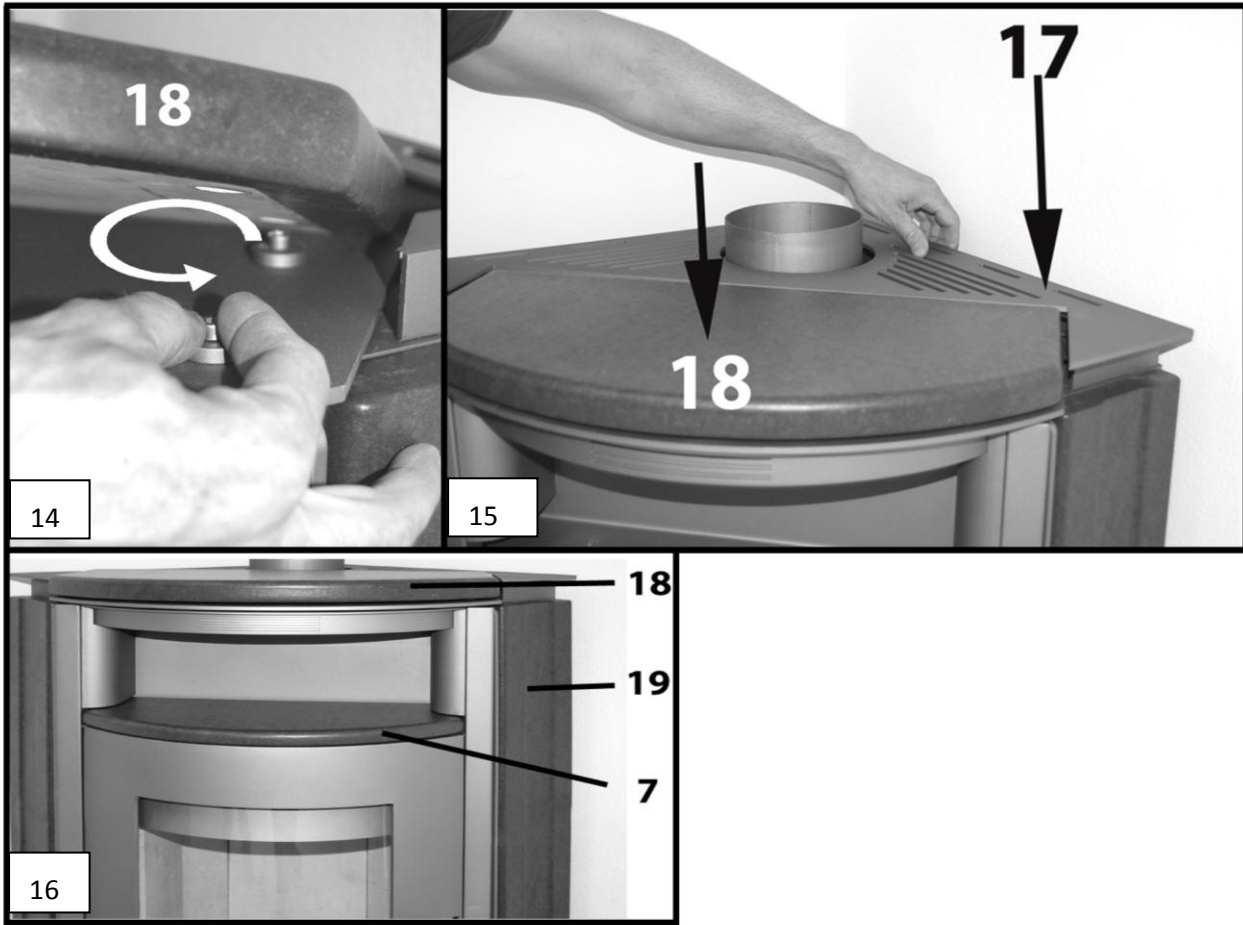
Montageanleitung - Istruzioni di montaggio - Notice de montage - Assembly Instructions Kuopio II 265.17-ST



Montageanleitung - Istruzioni di montaggio - Notice de montage - Assembly Instructions Kuopio II 265.17-ST



Montageanleitung - Istruzioni di montaggio - Notice de montage – Assembly Instructions Kuopio II 265.17-ST



Art Nr.	Nr.	Stk.	Bezeichnung	pezzi di ricambio	pièces de rechange	spare parts
0032060800000	1	8	Mutter M8 (1)	la madrevite	écrou à oreilles	wingnut
0032060600000	2	8	Beilagen M8 (2)	la madrevite	écrou à oreilles	wingnut
0426517000002	3	8	Montagebügel	la lastra di montaggio	la plaque de montage	Preassemble mounting plate
0426518010200	19	2	Seitenwand ST	panello laterale	élément latéral	Side pane
0425318010100	18	1	Deckplatte ST	piastra di copertura	plaque de recouvrement	Cover plate
0426518610300	7	1	Wärmefachplatte ST	ripiani scaldavivande	plaque pour réchaud.	Warming insert plate
0426518020200	19	2	Seitenwand PD	panello laterale	élément latéral	Side pane
0425318020100	18	1	Deckplatte PD	piastra di copertura	plaque de recouvrement	Cover plate
0426518620300	7	1	Wärmefachplatte PD	ripiani scaldavivande	plaque pour réchaud.	Warming insert plate